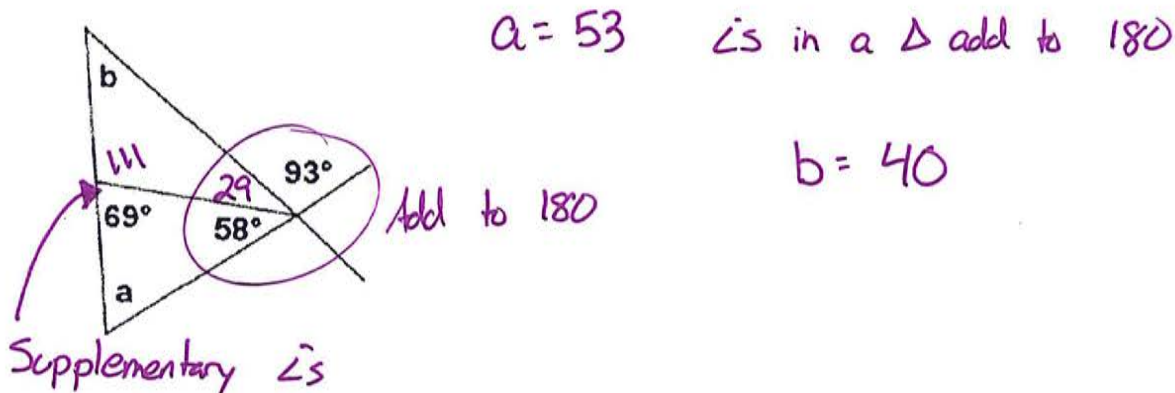


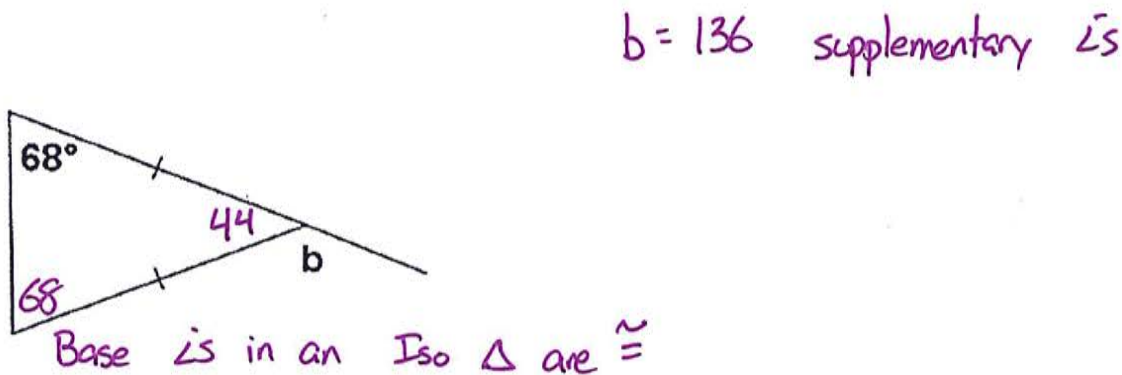
OBJECTIVE: Triangles, parallel lines, and angles, OH MY!

Using your knowledge of triangles, parallel lines, and pairs of angles, answer the following questions

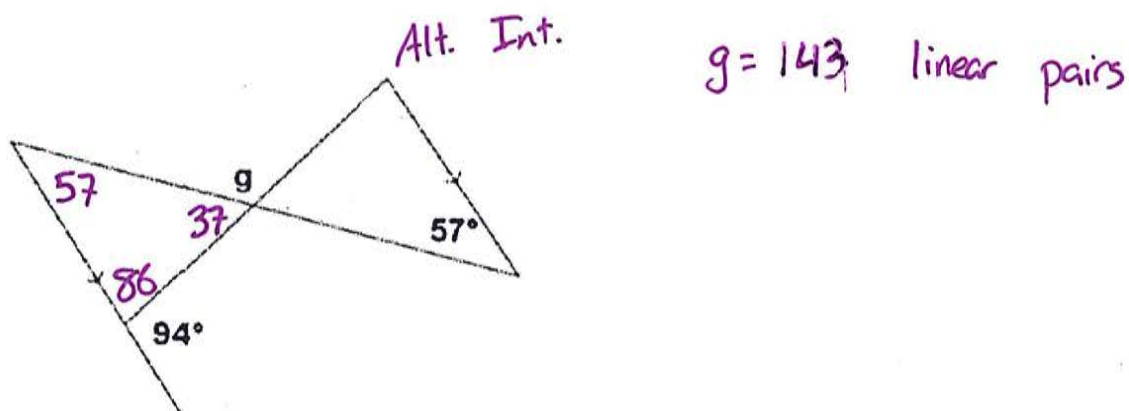
1. Find the measure of angles a and b in the given diagram. Justify your answer.



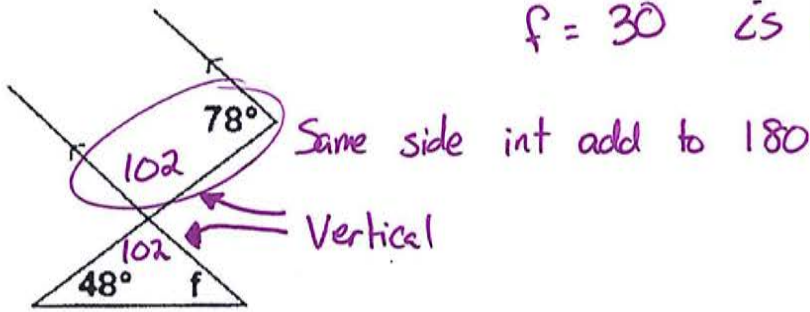
2. Find the measure of angle b in the given diagram. Justify your answer.



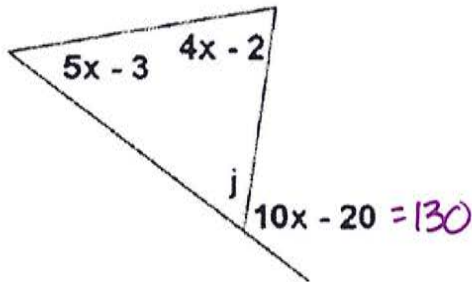
3. Find the measure of angle g in the given diagram. Justify your answer.



4. Find the measure of angle f in the given diagram. Justify your answer.



5. Find the measure of angle j in the given diagram. Justify your answer.



$$5x - 3 + 4x - 2 = 10x - 20$$

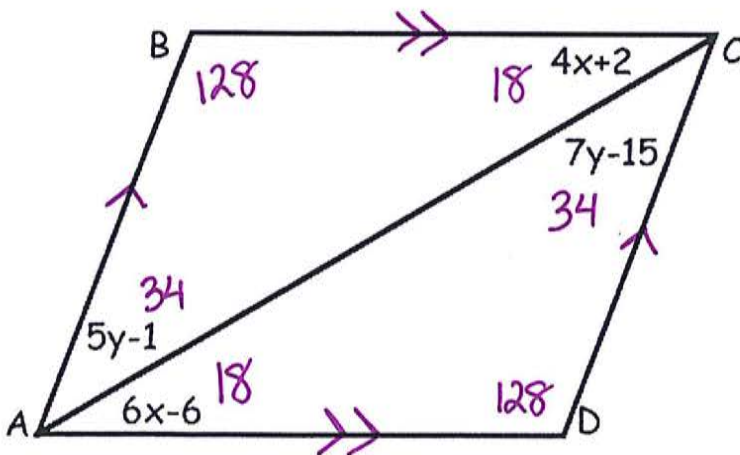
$$9x - 5 = 10x - 20$$

$$15 = x$$

the sum of the remote int \cong to the exterior

$$j = 50 \text{ linear pairs}$$

6. In the given quadrilateral, $\overline{AB} \parallel \overline{CD}$ and $\overline{BC} \parallel \overline{DA}$, find x , y , and $m\angle B$.



$$4x+2 = 6x-6$$

$$8 = 2x$$

$$x = 4$$

$$5y-1 = 7y-15$$

$$14 = 2y$$

$$y = 7$$

$$m\angle B = 128$$