

Unknown Angles REVIEW

I. Vocabulary

- A. Vertex, Sides, Angles
- B. Acute, Right, Obtuse, Straight Angles
- C. Supplementary angles add up to 180
- D. Complementary angles add up to 90
- E. Adjacent angles share a Side (Ray) and Vertex
- F. Linear pairs add up to 180
- G. Vertical Angles are =
- H. Consecutive Adjacent Angles on a Line add to 180
- I. Angles Around a Point add to 360

II. Name all sides, vertices, and angles. Be sure to name each angle four (4) different ways.

1.

Sides \overline{AB} , \overline{BT} , \overline{TA}

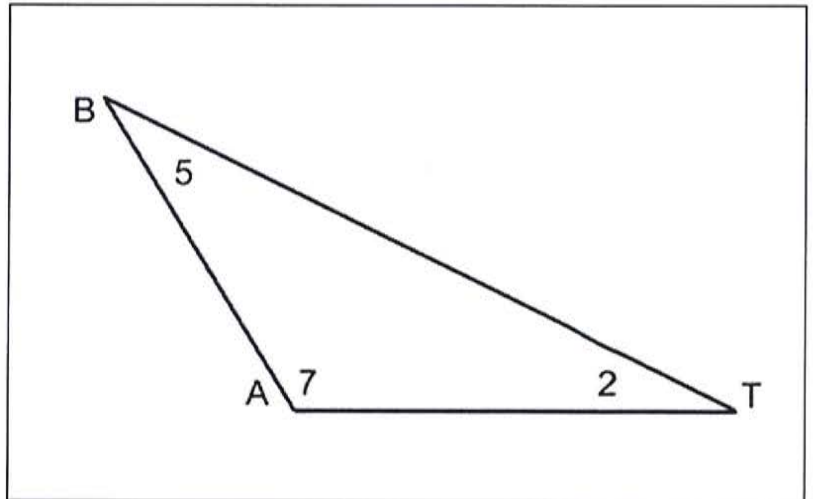
Vertices B, A, T

Angles

$\angle A$, $\angle 7$, $\angle BAT$, $\angle TAB$

$\angle B$, $\angle 5$, $\angle ABT$, $\angle TBA$

$\angle T$, $\angle 2$, $\angle BTA$, $\angle ATB$



III. Identify if the following angles are acute, straight, right, or obtuse

2. 127

Obtuse

3. 90

Right

4. 179

Obtuse

5. 81

Acute

6. 180

Straight

7.

Straight

8.

Acute

9.

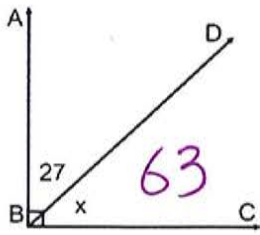
Obtuse

10.

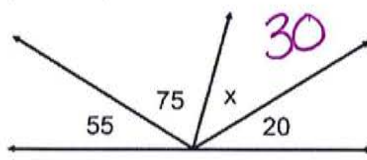
Right

IV. Solve for x the missing angles

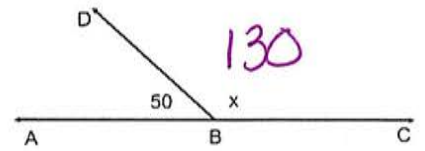
11.



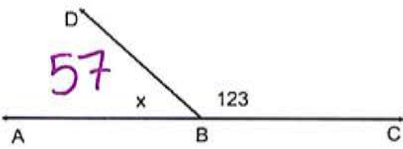
12.



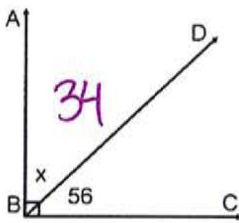
13.



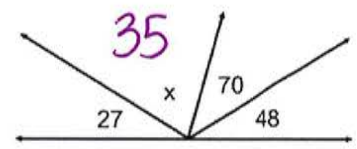
14.



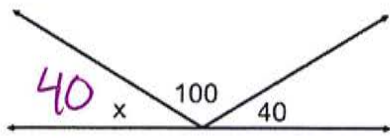
15.



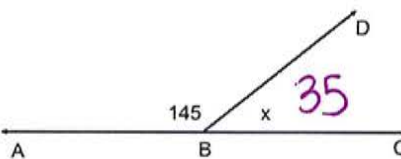
16.



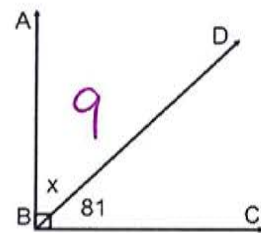
17.



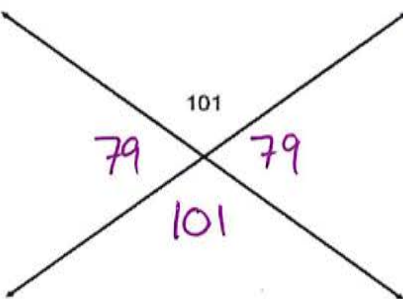
18.



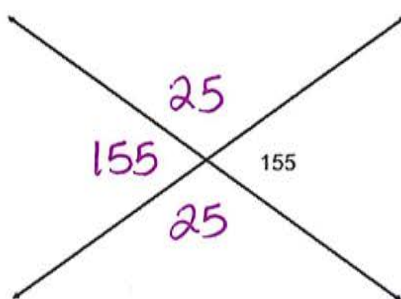
19.



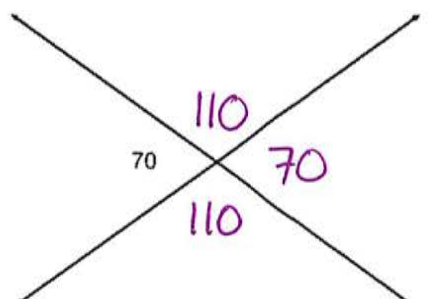
20.



21.



23.



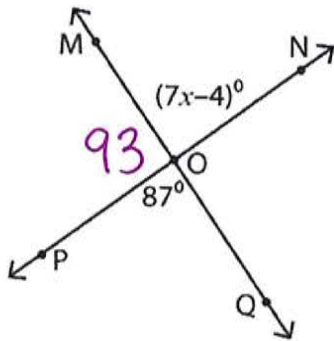
24. What is the complement of 42° ? **48**

25. What is the supplement of 111° ? **69**

25. What is the complement of 11° ? **79**

26. What is the supplement of 15° ? **165**

27. Solve for x and find $\angle MOP$

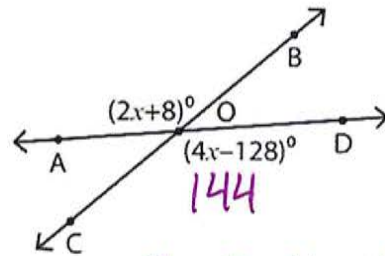


$$87 = 7x - 4$$

$$91 = 7x$$

$$x = 13$$

28. Solve for x and find $\angle COD$

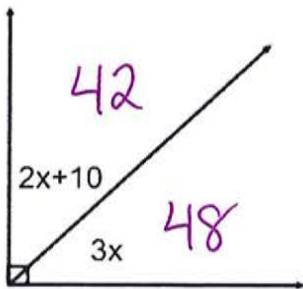


$$2x + 8 = 4x - 128$$

$$136 = 2x$$

$$x = 68$$

29. Solve for x and find both angles

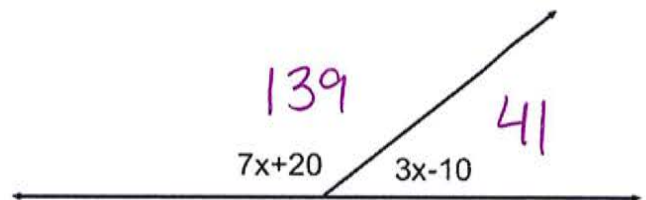


$$2x + 10 + 3x = 90$$

$$5x = 80$$

$$x = 16$$

30. Solve for x and find both angles



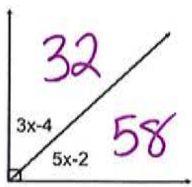
$$7x + 20 + 3x - 10 = 180$$

$$10x + 10 = 180$$

$$10x = 170$$

$$x = 17$$

31. Solve for x and find both angles



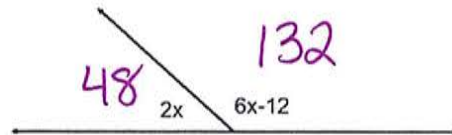
$$3x - 4 + 5x - 2 = 90$$

$$8x - 6 = 90$$

$$8x = 96$$

$$x = 12$$

32. Solve for x and find both angles



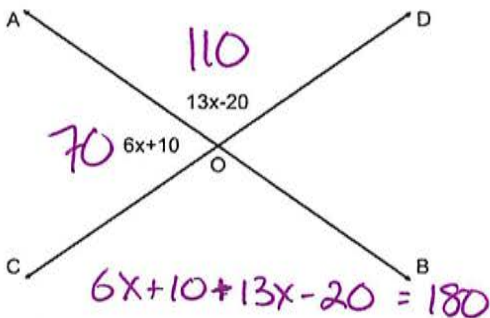
$$2x + 6x - 12 = 180$$

$$8x - 12 = 180$$

$$8x = 192$$

$$x = 24$$

33. Solve for x and find both angles



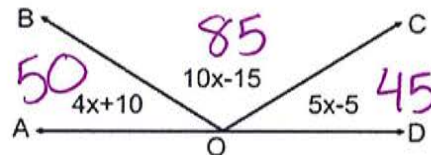
$$6x + 10 + 13x - 20 = 180$$

$$19x - 10 = 180$$

$$19x = 190$$

$$x = 10$$

34. Solve for x and find all angles



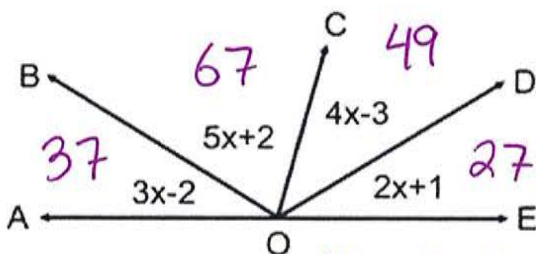
$$4x + 10 + 10x - 15 + 5x - 5 = 180$$

$$19x - 10 = 180$$

$$19x = 190$$

$$x = 10$$

35. Solve for x and find all angles

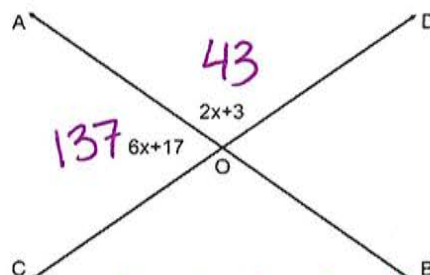


$$14x - 2 = 180$$

$$14x = 182$$

$$x = 13$$

36. Solve for x and find both angles



$$6x + 17 + 2x + 3 = 180$$

$$8x + 20 = 180$$

$$8x = 160$$

$$x = 20$$